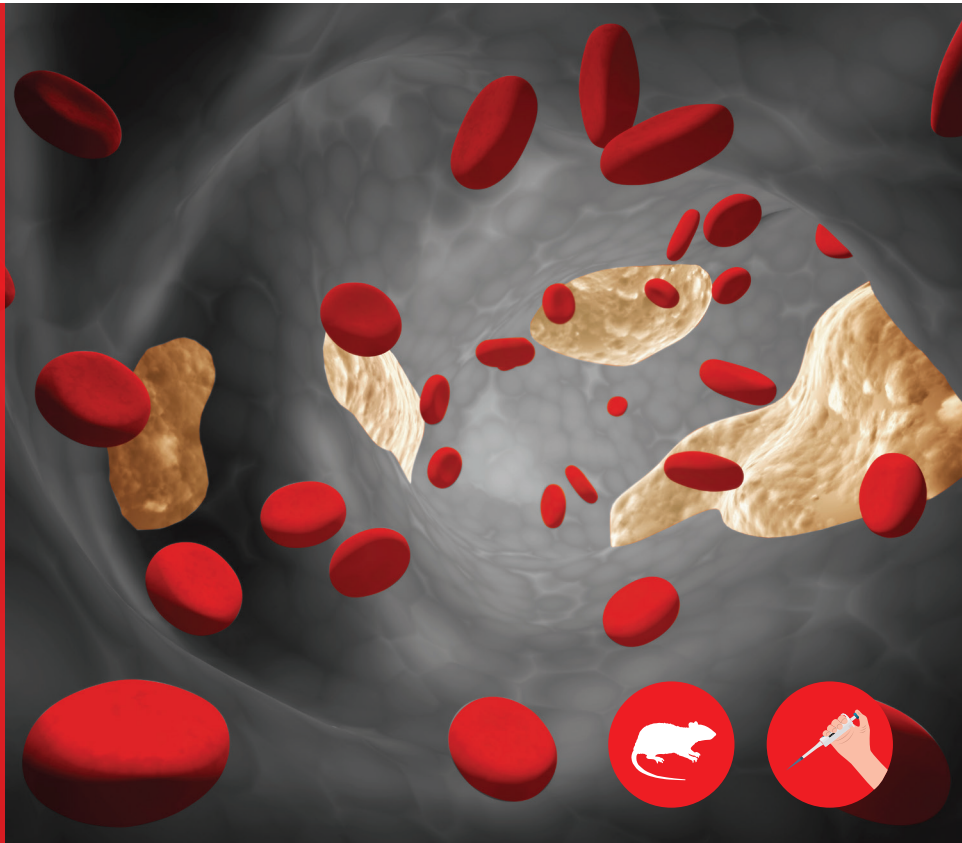


## WELL CHARACTERIZED, VALIDATED AND TRANSLATIONAL ANIMAL MODELS FOR BETTER ASSESSMENT OF METABOLIC DISORDER DRUG CANDIDATES

We at GVK BIO offer acute and chronic animal models to screen drug candidates for metabolic diseases. We also have vast experience in developing customized and translational animal models for your unique drug discovery needs. In addition, our scientists have established a number of *ex vivo* and *in vitro* assays that utilize primary cells or differentiated adipocytes.

GVK BIO is a preclinical research organization that offers outstanding research services, specialized in metabolic disorders such as obesity, diabetes and dyslipidemia. More than just a service provider, we are your partner of choice to guide your drug discovery programs from hit identification to clinical candidate selection and IND filing. Our clients include large, mid-sized and virtual pharmaceutical companies as well as academic institutions located globally.



### Obesity Animal Models:

- > **Acute Dyslipidemia Model**
  - Corn oil induced lipid intolerance
  - Intralipid and triton induced lipid intolerance
- > **Acute Hyperghrelinemia Model**
  - Fasting induced hyperghrelinemia
  - Medium Chain Triglyceride (MCT) induced hyperghrelinemia
- > **Chronic Obesity Model**
  - High Fat Diet (HFD) induced obesity

### Diabetes Models:

- > **Chronic Model**
  - High Fat Diet (HFD) induced Insulin Independent Diabetes Mellitus (type-II) model
- > **Target Engagement**
  - SGLT-2
  - GLP-1